

MAY 5, 6 & 7, 2023 10am - 4pm Each Day



START

57 LOCAL ARTISTS AT 28 VENUES THROUGHOUT WYOMING COUNTY, PA  
A North Branch Art Trail Event - [WyCAAT.com](http://WyCAAT.com)



**Est. 1842**

**Wyoming County**

**Explore  
Wyoming County**



**Where Nature, Art,  
& Culture Converge!**

Welcome to Wyoming County from your local commissioners...  
Rick Wilbur, Tom Henry, and Ernie King





Welcome to the inaugural Wyoming County Arts & Artists Tour! On May 5, 6 & 7, from 10am to 4pm each day, we encourage you to get out and meet the county's artists while you also explore its many historic sites, attractions, and destinations.

This tour booklet provides you with clear listings and maps to guide you to each of the tour's 28 Tour Stops located throughout the county.

At each Tour Stop, you'll find one, two, three, or four local artists showcasing their work – for a total of 57 participating artists.

The map below shows you where you'll be traveling in the county and which area is covered by which of the three inset maps you'll find later in the booklet.

Map 1 (pages 6 & 7) features Tour Stops 101 through 108.

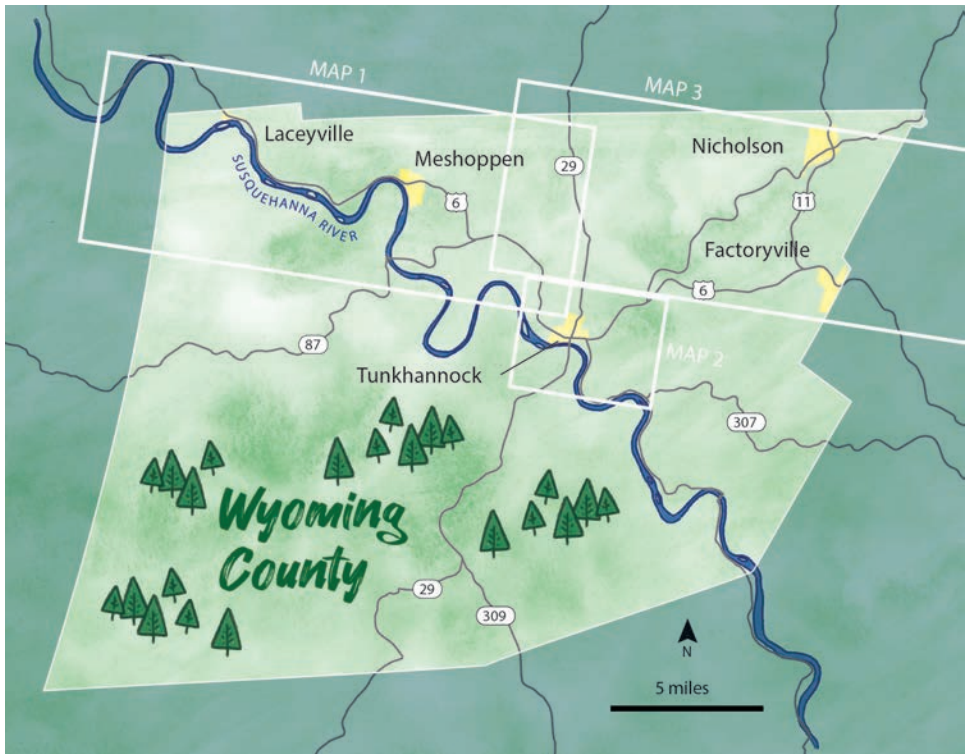
Map 2 (pages 30 & 31) features Tour Stops 109 through 119.

Map 3 (pages 44 & 45) features Tour Stops 120 through 128.

If you get hungry, be sure to check out our Dining Guide on page 40 for recommendations.

#### A North Branch Art Trail Event

For more information, go to [WyCAAT.com](http://WyCAAT.com) or contact us at [northbrancharttrail@gmail.com](mailto:northbrancharttrail@gmail.com) or 570-289-4977





# THE VENUES

- Art Center at Keystone College, The – see page 57 (127)
- Belhana Glass Studio – see page 37 (115)
- Blossoming Stems Floral – see page 17 (107)
- Brown Hill Farms – see page 49 (122)
- Creekside Gardens – see page 39 (116)
- Darlene Keen Studio – see page 43 (118)
- Sarrah Dibble-Camburn Studio – see page 51 (123)
- Fun & Functional Pottery – see page 41 (117)
- Gravel Hill Studio – see page 23 (110)
- Kintner Modular Homes – see page 21 (108)
- Kintner's Olde Mill – see page 17 (106)
- Kitson Gallery – see page 33 (113)
- Laceyville Hardware – see page 9 (101)
- Lake Carey Pottery & Friends – see page 47 (120)
- Lemon Tree Art Studio – see page 49 (121)
- Memory Lane Antiques & Collectibles – see page 9 (102)
- Mountain Sprigs Farm – see page 51 (124)
- Nicholson Tourism Center at the Historic DL&W Railroad Station – see page 55 (126)
- Oldest House, The – see page 11 (103)
- Parish Center, The ("The Casino") – see page 13 (105)
- Shadowbrook Resort – see page 43 (119)
- Studio 79 – see page 27 (112)
- Studio of Charles Welles, The – see page 57 (128)
- Sue Palackas Contemporary Artist Studio – see page 13 (104)
- Swalebrook Studio – see page 23 (109)
- Terry Proctor Studio – see page 53 (125)
- Wyoming County Courthouse – see page 27 (111)
- Wyoming County Cultural Center – see page 33 (114)





# THE ARTISTS

Seeking a specific artist or two? This is where you'll find them:

Patrick Albert – see page 13 (105)

Walter D. Ball – see page 55 (126)

Laura Boner – see page 39 (116)

Michele Brown – see page 49 (122)

Bubba – see page 43 (119)

Nannette M. Burti – see page 47 (120)

Amy Griffith Colley – see page 33 (114)

Stephen J. Colley – see page 33 (114)

Lavona Daniels – see page 23 (110)

Claire Davis – see page 47 (120)

Amy Denmon – see page 57 (127)

Sarrah Dibble-Camburn – see page 51 (123)

Charlotte Dickinson – see page 53 (125)

H. Dean Fisher – see page 55 (126)

Richard Griffith – see page 55 (126)

Jan Henning – see page 9 (101)

L.P. Howard III – see page 55 (126)

J&J Apiaries – see page 51 (124)

Susan Jayne – see page 11 (103)

Rebecca Kameronoski – see page 47 (120)

Kathi Harter Keefe – see page 47 (120)

Darlene Keen – see page 43 (118)

Megan Kobbe – see page 41 (117)

Dr. Sonji Lee – see page 49 (122)

Earl W. Lehman – see page 13 (105)

Ariana Lizza – see page 17 (106)

Carol Matheson – see page 39 (116)

Michelle McKenzie – see page 33 (113)

Debra Lee Osborne – see page 9 (101)

Sue Palackas – see page 13 (104)

Hal Pratt – see page 9 (102)

Terry Proctor – see page 53 (125)

Tommie Robinson – see page 41 (117)

Bryon Rood – see page 27 (112)

Mary Sadauckas – see page 23 (110)

Renee Sands – see page 37 (115)

Rebekah Sayre – see page 23 (109)

Concetta Schirra – see page 37 (115)

Silver Threads Quilting Group – see page 51  
(124)

Doug Sivers – see page 21 (108)

Joanne Sivers – see page 21 (108)

Brandon Guy Smith – see page 57 (127)

Jayne Stevens – see page 21 (108)

Alice J. Strauss – see page 33 (113)

Victoria Switzer – see page 43 (119)

Michelle Thomas – see page 23 (109)

Krista Truesdale – see page 17 (106)

Kora Tyler – see page 17 (107)

Maureen Van Nostrand – see page 39 (116)

Gail Vieczorek – see page 41 (117)

Alford Wayman – see page 11 (103)

Charles Welles – see page 57 (128)

Frank Wengen – see page 13 (105)

Jeremy Werkheiser – see page 27 (112)

Lisa Wray – see page 49 (121)

Joan Yeager – see page 11 (103)

Susan Zellner – see page 37 (115)

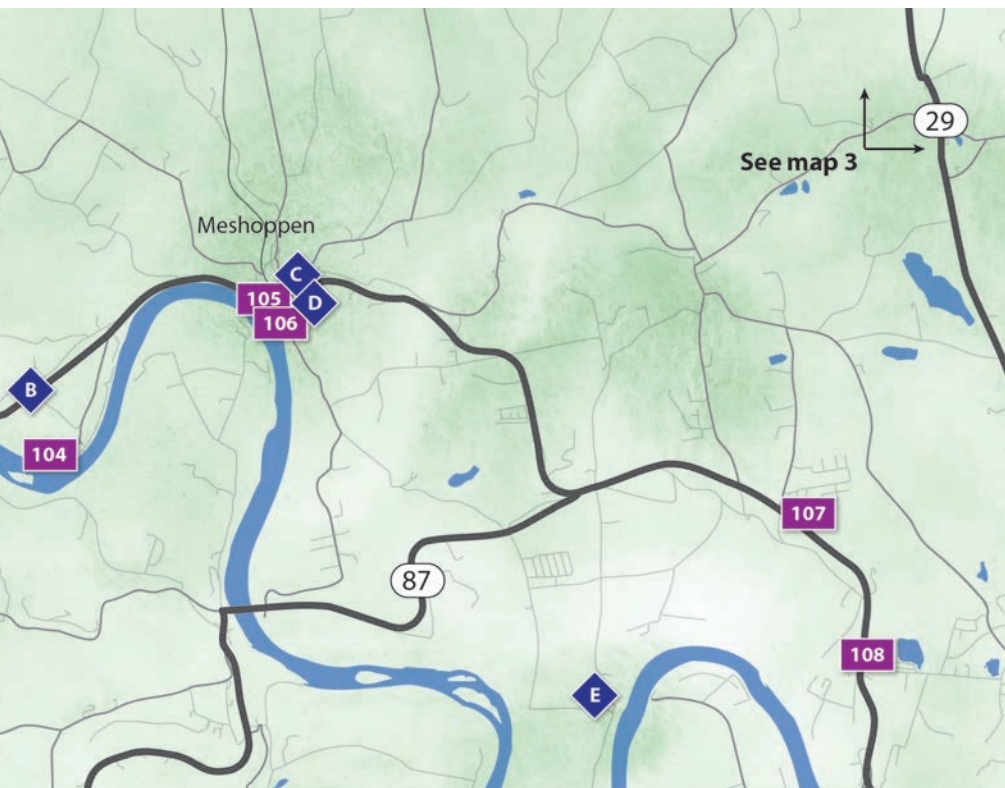


# Mark's Valley View Restaurant & Motel

152 Diner Road (off Route 6), Laceyville, PA 18623

570-869-2910

Open 6am to 8pm Tuesday-Saturday • 6am-6pm Sunday • Closed Monday



## The Wiser Choice

419 Main Street  
Laceyville, PA 18623  
570-869-2203

Monday-Saturday  
5am-2pm  
Closed Sunday



## Lech's Pharmacy

**Your Local Pharmacy**

415 Main Street,  
Laceyville, PA 18623  
570-869-8700

291 Main Street  
Nicholson, PA 18446  
570-942-4207  
lechsrx.com





# LACEYVILLE HARDWARE & FLOOR COVERING



425 Main Street  
Laceyville, PA  
18623  
570-869-1277

[laceyvillehardware.com](http://laceyvillehardware.com)

Hours of Operation:  
Mon-Fri; 8:00am-5:30pm  
Sat; 8:00am-3:30pm

## Memory Lane Antiques & Collectibles

420 Main Street, Laceyville, PA 18623

Thursday-Friday-Saturday;  
10am to 4pm  
Sunday; 11am-2pm  
(by chance - call first)

570-240-1628



## Simple Treasures, Antiques & Gifts

222 Addison Lane  
Meshoppen, PA 18630

Monday - Sunday; 10am to 5pm  
Open 7 days a week

570-240-1628



Susan Jayne

Acrylics  
Watercolors

570-954-4248  
[rjayne8@aol.com](mailto:rjayne8@aol.com)



CREATE  
DESIGNS  
570.250.7835

Design & Marketing  
Solutions

GRAPHIC DESIGN  
EMBROIDERY  
SCREEN PRINTING  
SIGNAGE  
BANNERS




[www.createdesigns.studio](http://www.createdesigns.studio)



# THE ARTISTS

101

Laceyville Hardware  
425 Main Street, Laceyville, PA 18623  
570-869-1227 – laceyvillehardware.com 



**Jan Henning** *Oils*  
570-466-2243

She has painted since she was eight years old. Her aunt, an artist, gave Jan her first oil paint set. The two of them would sit in a field and paint together. Jan always wanted to record God's great beauty – land, mountains, oceans, and creatures. She wanted to share her talents with others. Jan is currently teaching and recording God's handiwork.



**Debra Lee Osborne** *Watercolors, Acrylics, Gouache*

A Wyoming and Bradford County-based artist, Debra Lee is most noted for her detailed watercolors, acrylics, and gouache paintings, with an emphasis on rural architecture at its finest. Her works are currently displayed at the Blue Heron Gallery in Wyalusing and the Kitson Gallery in Tunkhannock. Self-taught, through different mediums, Debra Lee's paintings encompass her adventure through time.

102

Memory Lane Antiques & Collectibles  
420 Main Street, Laceyville, PA 18623  
570-240-1628 



**Hal Pratt** *Author*  
570-380-4284

Hal is an author and storyteller. His stories have appeared in several children's magazines, including Highlights for Children and Plays. His storytelling has been featured multiple times at the Dietrich Theater and other venues. Hal writes books for young readers ages five to nine and older readers as well. He resides at Lake Carey.

WYOMING COUNTY was created in 1842 from part of Luzerne County. As of the 2020 census, its population was 26,069, with 10,762 households and 7,705 families residing in the county, and a population density of 71 people per square mile.

All Events  
**FREE**

## *The Oldest House* 297 E Main St., Laceyville, PA



Three floors of history and genealogy  
Railroad & canal photos,  
antique quilts,  
period clothing  
1780s Keeping Room

### *Weekend Tours*

May 14 through September  
Call 570-869-1679 or 570-721-3657

### **Simpler Thyme**

Friday, May 12 and Saturday, May 13  
9am-5pm

**PROUD TO BE  
HOSTING  
Three  
Sensational  
Local Artists —  
Susan Jayne,  
Alford Wayman,  
and Joan Yeager  
— During the  
Wyoming County  
Arts  
& Artists Tour**

**Watch the  
EMVB  
Website  
for More  
Events  
to Come!**

Funded in part by the  
Endless Mountains Visitors  
Bureau and the Wyoming  
County Room Tax Fund

### **Creek Road Pottery LLC**

917 Creek Road, Laceyville, PA 18623  
**Alford Wayman**  
570-677-3440  
CreekRoadPottery.com



*handmade pottery that matters  
for  
people who care*





103

The Oldest House  
297 Main Street, Laceyville, PA 18623  
570-869-1426 – theoldesthouse.com



**Susan Jayne** *Acrylics, Watercolors*  
570-954-4842

Susan paints mostly in acrylics and watercolors. She lived in England and has traveled in Europe and across the U.S. She now calls Laceyville, PA home, and enjoys membership in EMCA and Slanted Art. Mondays, she paints with a plein air group and Wednesdays she explores values and mediums. Susan lives her life with love and hope.



**Alford Wayman** *Pottery*  
570-677-3440 [alfordwayman.com](http://alfordwayman.com), [creekroadpottery.com](http://creekroadpottery.com)

Al was introduced to clay in an introductory ceramic class at Keystone College in 1996. There, thanks to artist and professor Bill Tersteeg, he fell in love with clay as a medium. After achieving his AFA, Al spent three years at Marywood University, where he completed his BFA in Ceramics. Today, Al owns Creek Road Pottery in Laceyville.



**Joan Yeager** *Watercolors*  
570-746-3589

Joan is a watercolor artist from Chester County, PA. Upon moving to NEPA, she began painting with the en plein air group from the Endless Mountains Council of the Arts. Joan's art has been exhibited throughout Pennsylvania and New York State, where she loves painting the beautiful mountain views.

Discover the ... OLDEST HOUSE



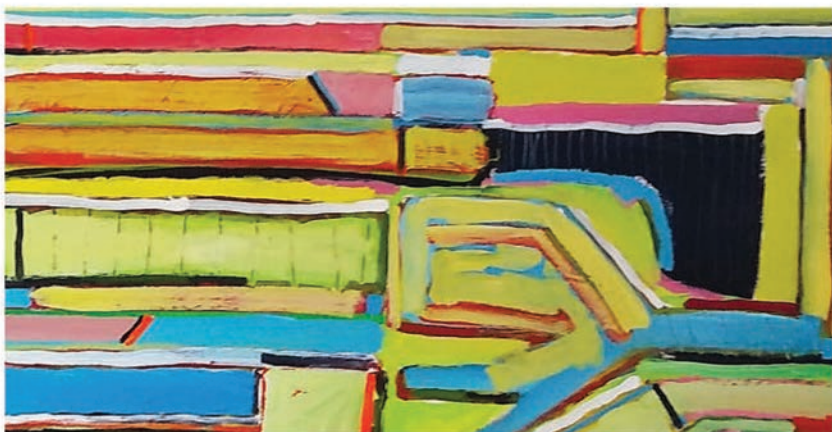
Old is a good thing. Ask the residents of Laceyville, Pennsylvania, if you don't believe it. That community is mighty proud of their "Oldest House."

Built by Revolutionary War veteran James Smith for his family in the 1780s, the frame house originally faced the North Branch of the Susquehanna River but was later reoriented with a front door facing Main Street. Smith would move with his three sons to Schuylers County, New York, in 1894, selling the house to Ebenezer Skinner for 100 pounds.

After being bought and sold and passed down through family members, the newly-formed Laceyville Area Historical Society purchased the house in 1976. Since that time Laceyville's Oldest House has been lovingly cared for by the Historical Society.

Over the decades, renovations and improvements have been made to the house, including a stone patio to the rear, a wrap-around veranda, a new roof, and a newly-repaired foundation. But many features of the house are original, including the hanging irons and other forged items which originated in a local blacksmith's shop and the extraordinary ten-foot square chimney with its black walnut mantle and four fireplaces.

Now almost 250 years old, the house is open to the public to tour and enjoy. Tours are given on weekends and during special events May through September. For more information and to arrange a tour or small event at the house call 570-869-1679 or 570-721-3657.



# EARL W. LEHMAN

Visual Artist • 4024 State Route 367 • Laceyville, PA 18623  
570.881.3438 • elehman.visualart@gmail.com

Discover the ... WYOMING COUNTY FAIRGROUNDS



Just about everyone loves a fair and the people of Wyoming County are no exception. The original Wyoming County Fair dates back to 1857 and took place in Eaton Township, but World War II and financial troubles forced it to close. Coming to the rescue in 1986 was the Tunkhannock Kiwanis Club, locating the fair on borrowed lands along Route 92 in Tunkhannock.

The 1991 fair was moved to Meshoppen when the Kiwanis Wyoming County Fair decided to make a financial decision to purchase 231 acres of property along Route 6. And the fair has kept growing ever since.

With the theme of "Growing the Future," this year's fair will take place August 30-September 4, 2023. A highlight of the entertainment will be Jimmie Allen w/Neon Union. Singer of the 2022 hit "Down Home," Allen is a multi-platinum selling, trailblazing Country star and 2022 GRAMMY Award nominee. Also performing is LIVE WIRE—"The Ultimate AC/DC Experience," along with various local bands.

More features include the Cowboy Circus, the Human Cannonball Daredevils, Wheels of Agriculture Game Show, the Jehile Kirkhuff Event (fiddle music), Dennis Beach—World Champion Chainsaw Carver, Buffalo Beal's Petting Zoo, and much, much more.

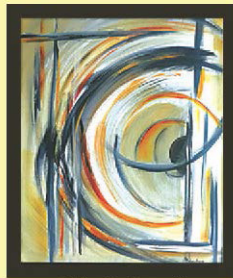
**Kristi's  
Kountry Kitchen**



9869 State Route 6  
Meshoppen, PA 18630  
570-869-1944  
Open Daily 5am-2pm



**Sue Palackas**



Contemporary Artist  
Studio & Gallery  
Maple Lane,  
Meshoppen, PA  
OPEN by APPOINTMENT  
570.833.5064  
or 607.434.5865  
sopalackas@gmail.com

"What Lies Beyond"



# THE ARTISTS

104

**Sue Palackas Contemporary Artist Studio**  
152 Maple Lane, Meshoppen, PA 18630  
607-434-5865



**Sue Palackas** *Watercolors, Acrylics*  
607-434-5865

As a retirement gift, Sue's husband gave her watercolor classes. An old love of creativity was reborn. She is inspired by color, texture, and form. Although realism is her first love, intuitive abstract is where her 'happy place' is now. Sue loves to explore using watercolors, acrylics, collage, mixed media, and alcohol inks.

105

**The Parish Center ("The Casino")**  
115 Loomis Lane, Meshoppen, PA 18630



**Patrick Albert** *Stained Glass*  
570-960-2838

A graduate of the University of Scranton, Patrick's fascination with stained glass goes back many years and has become a true passion in his life. Inspired by such great stained-glass artists as Frank Lloyd Wright, John LaFarge, and Louis C. Tiffany, Patrick's tastes vary and his work revolves around styles that include Victorian, American Arts & Crafts, Contemporary, and others.



**Earl W. Lehman** *Acrylics*  
570-881-3438

Earl is a long-time member of the Arts in Education roster of the PA Council of the Arts. He graduated magna cum laude from Kutztown University, served four years in the Army Security Agency, is a Viet Nam veteran, and was the winner of the prestigious F. Lammot Belin Arts Scholarship in 1994.



**Frank Wengen** *Watercolors*  
570-239-8064 

Frank has painted in watercolors for nearly four decades and draws inspiration from the awesome beauty discovered through observation of everyday things. His works are a result of time spent exploring forests, fields, and streams in the mountains of Pennsylvania. He paints to capture, translate, and share the uplifting, peaceful, and comforting emotions he experiences through his frequent forays afield.



**NRA  
&  
USCCA  
Trainings**

•Buy  
•Sell  
•Trade  
•Indoor Shooting  
Range

Benelli, Stoeger, Franchi, Henry Repeating Arms and More

**Open 7 Days a Week**

Mon-Tues-Wed: 10am-6pm

Thurs & Fri: 10am-8pm

Sat: 10am-5pm • Sun: 12-5pm

[www.BurkesGunShop.com](http://www.BurkesGunShop.com)

Email: [Info@BurkesGunShop.com](mailto:Info@BurkesGunShop.com)

Family Operated • Veteran Owned by Brian Burke



570-767-2278

**Book  
Your  
Auction  
Today**



**Specializing in:**

Firearms, Real Estate, Antiques, Farms,  
Equipment, Industrial, Coin, Business and Estate  
Liquidations

Family Operated • Veteran Owned by Brian Burke

**BRIAN BURKE  
AUCTIONS**

Brian Burke, Auctioneer - AU003255L

[www.BrianBurkeAuctions.com](http://www.BrianBurkeAuctions.com)

Email: [Info@BrianBurkeAuctions.com](mailto:Info@BrianBurkeAuctions.com)



- Food • Wine • Beer • Liquor
- Live Entertainment
- Craft Vendors & More

**OCTOBER 28TH, 2023**

9141 US-6, Meshoppen Twp. PA 18630

[www.WyomingCountyFair.com](http://www.WyomingCountyFair.com)

Funded in part by the Wyoming County Room Tax Fund and the Endless Mountains Visitors Bureau



**AUG. 30TH-SEPT. 4TH, 2023**

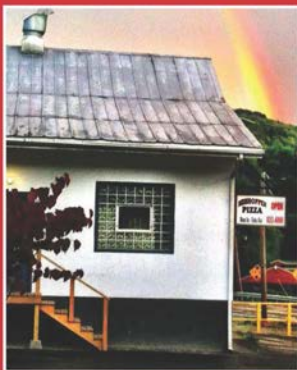
9141 US-6, Meshoppen Twp. PA 18630

Free Parking - Free Rides with Admission

[www.WyomingCountyFair.com](http://www.WyomingCountyFair.com)

Buffalo Beals Petting Zoo • Penn State Master Gardeners • Dave Sechrist Blacksmith Shop •  
George Gay Antique Barn • Local Bands • Rides & Games by JIM HOUGHTON ENTERPRISES  
• Truck & Tractor Pulls • Demo Derby • Tuff Truck • Horse Pulls • High School Rodeo •  
Concert with Beer Garden • Agricultural Shows • Daily Grounds Acts • Baby Show •  
Fair Queen & Junior Fair Queen Contests • Farmer's Market (Local Vendors & Wineries)

Funded in part by the Wyoming County Room Tax Fund and the Endless Mountains Visitors Bureau



8160 US-6, Meshoppen, PA • 570-833-4990

# Meshoppen Pizza



## Marty's Market

Country Butcher Shop Quality  
at Supermarket Prices

7960 SR 6, Meshoppen, PA 18630  
570-833-5494

11088 SR 307, Lake Winola, PA 18625  
570-378-4200

[martyscountrymarket.com](http://martyscountrymarket.com)







# KINTNER'S OLDE MILL

**New & Used Furniture of all Kinds**

**Household Goods**

**Antiques**

**Appliances**

**Collectibles**

**and so much more**



(570) 833-4775  
[william\\_kintner@yahoo.com](mailto:william_kintner@yahoo.com)  
 Corner of Sterling & Church Streets  
 Meshoppen, PA






# THE ARTISTS

106

Kintner's Olde Mill

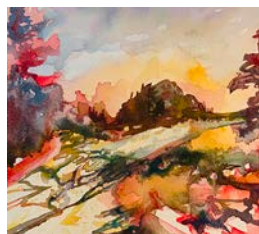
178 Sterling Street, Meshoppen, PA 18630  
(Corner of Sterling & Church Streets)

570-833-4775 



**Ariana Lizza** *Photography*

Ariana is a photographer and entrepreneur based in Tunkhannock, PA. She has dedicated her career to capturing and preserving special moments. With a BS in environmental science and a business restoring photographs, she has combined her passions to create wildlife photography. Through her work, Ariana hopes to portray the magnificence of Pennsylvania and its abundance of beautiful wildlife.



**Krista Truesdale** *Watercolors*  
570-574-4139

Krista works with two painting approaches: abstract and representational landscapes. The most essential element in all of her pieces is COLOR. In her abstract paintings she intends to illustrate an ongoing momentary lapse of time. Her inspiration comes from nature. Krista's representational landscapes are more realistic and contain hints of abstract colors and brushstrokes.

107

Blossoming Stems Floral

1 Kim Avenue, Suite 8, Tunkhannock, PA 18657

570-290-3568 – blossomingstemsfloral.com 



**Kora Tyler** *Resin, Polymer Clay*  
570-665-4301

Every piece Kora creates is completely unique. Her art is inspired by nature and, often, she incorporates natural objects directly into her work. When she first started working with resin, she discovered how much she enjoyed the creative process and started her business, Wild Rose Designs. She then branched into polymer clay, and her jewelry is made with sterling silver.

Discover the ... OLD WHITE MILL



Added to the National Register of Historic Places in 1975, the Old White Mill (also known as Sterling Mill and Pinnock Mill) rises five and a half stories over the north side of Meshoppen Creek to house an historic grist mill that was built in 1852. It is located off Welles Street, just east of the Route 267 bridge, in Meshoppen. This banked frame structure sits on a stone foundation. Sad to say, the building is presently unoccupied.



570-290-3568 • [BlossomingStemsFloral.com](http://BlossomingStemsFloral.com)  
1 Kim Avenue, Suite 8, Tunkhannock, PA 18657



Discover ... VOSBURG NECK STATE PARK



Not all state parks are alike, and Vosburg Neck State Park, in particular, has a rather unique set of features. Lying just five miles west of Tunkhannock, the park's 669 acres boasts historic buildings from the 1700s and 1800s, a canal bed, a railroad bed, a 1700s-era cemetery, eight miles of trails, a non-motorized boating access, and picnic areas. But that's not all. The park is located in a lovely oxbow on the North Branch of the Susquehanna River known as the Vosburg Neck.

The park is the first state park in Wyoming County, designated as such less than a year ago. It is open every day of the year, sunrise to sunset. Day use areas close at dusk.



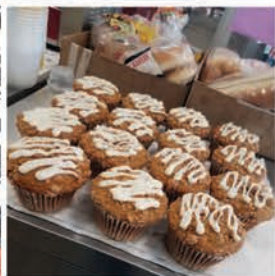
# D&C

## FUEL SALES



### MENU

APPETIZERS  
BURGERS & HOT DOGS  
HOT SUBS  
COLD SUBS  
DELI SANDWICHES  
BASKETFULS  
HOMEMADE CHILI & SOUP  
SALADS  
PIZZA  
BREAKFAST SANDWICHES



570.836.7785 (WEST) Open 24 Hours  
570.836.0472 (EAST) Open 5am - 9pm  
Tunkhannock, PA





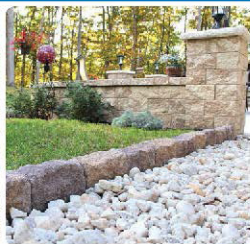
5903 SR 6  
Tunkhannock, PA 18657  
Near Tyler Memorial Hospital  
570.836.7604

Summer Hours:  
Monday-Friday 8-5  
Saturday 8-4



[natcreations.com](http://natcreations.com)

# POOL, SPA & LANDSCAPE SUPPLY



## MARQUIS SPAS

LET US HELP YOU BUILD YOUR BACKYARD PARADISE

# KINTNER

MODULAR HOMES, INC.

119 Modular Lane  
Tunkhannock, PA 18657  
570-836-9755 . [sales@kmhi.com](mailto:sales@kmhi.com)

At Kintner Modular Homes, we will guide you from the early stages of construction to the completion of your dream home.

With almost a half a century of experience and customizable floor plans you can take comfort in letting Kintner Modular Homes, coordinate your new Dream Home Project.



*Stepping inside one of our model homes is where the fun really begins. Contact us today!*



CONCEPT

01



PLANNING

02



BUDGET

03



EXECUTION

04

M-F: 8am - 4pm • Sat: 9am - 4pm • Sun: CLOSED • [kmhi.com](http://kmhi.com)



# THE ARTISTS

108

**Kintner Modular Homes**  
119 Modular Lane, Tunkhannock, PA 18657  
570-836-9755 – kmhi.com



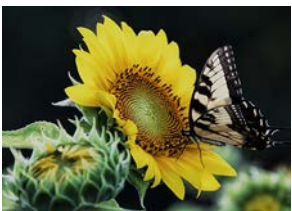
**Doug Sivers** *Wood*  
607-725-3086

Doug is a self-taught woodworker, shaping, turning, and carving wood into functional articles which can enhance the owner's life. He works with reclaimed, domestic, and imported woods. He rarely colors or stains – but rather applies clear, food-safe glues, finishes, and waxes that accentuate the wood's natural beauty and color. His pieces are simple and functional.



**Joanne Sivers** *Nature Photography*  
607-725-2791

Growing up in rural Susquehanna County launched Joanne's love and appreciation for nature. Photography grew on her as she grew and matured. She decided to explore and photograph the beautiful world around her. She has learned a lot through photography – bird, tree, and flower identification as well as techniques that improve her photographs.



**Jayne Stevens** *Photography*  
484-241-7907

Photography has always been a part of Jayne's life and, since her retirement, it has become her passion. Landscapes, wildlife, urban decay, and abandoned buildings fascinate her, and have been the subjects of her photography during her travels throughout the United States.

WYOMING COUNTY has five boroughs. In order of population, they are Tunkhannock (county seat), Factoryville, Nicholson, Meshoppen, and Laceyville.

# Swalebrook Studio



Michelle Thomas  
artist

159 West Tioga Street  
Tunkhannock, PA 18657  
570-240-1068  
swalebrk@ptd.net  
swalebrookstudio.com

# T&C Grille

*A great place to gather*



420 Tioga West Plaza • Tunkhannock, PA 18657  
570-836-2015  
tandcmenu.com

Restaurant & Bakery open Monday thru Saturday  
Monday-Friday 8-3, Saturday 8-2  
Closed Sunday

bakery 420



# KNUCKLEHEAD

## EMBROIDERY & SCREEN PRINTING

Polos • T-Shirts • Jackets • Sweatshirts • Hats  
Corporate Programs • Uniform Programs • Online Stores

**607-779-8160**  
**www.knuckleheadinc.com**

**Full Line of Promotional Items**





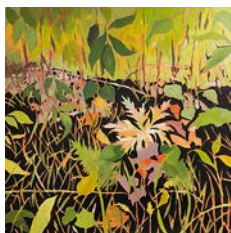
# THE ARTISTS

109

## Swalebrook Studio

159 West Tioga Street, Tunkhannock, PA 18657

570-240-1068 – swalebrookstudio.com



### **Michelle Thomas** *Acrylics, Watercolors, Collage*

570-240-1068 swalebrookstudio.com

Michelle is a member of the Endless Mountains Council of the Arts, the Wyoming Valley Art League, National Society of Painters in Casein and Acrylic, North Branch Art Trail, Kitson Arts Alliance, and the EMCA Monday Painters. She works mainly in acrylic and watercolor as well as collage.



### **Rebekah Sayre** *Oils*

570-362-0967 rebekahsayrestudio.com 

Rebekah is an emerging oil paint artist who works in a variety of subjects, but is most drawn to portraiture, especially capturing “moments” rather than static shots. She took lessons from Dalton-based artists Deb Hambey and Jennifer Brandon for two years in high school and has continued developing her skills since.

110


## Gravel Hill Studio

58 Susquehanna Avenue, Tunkhannock, PA 18657

570-690-5436



### **Lavona Daniels** *Watercolors*

570-690-5436 

Lavona has been a member of the Endless Mountains Council of the Arts for over 20 years and painted with a small group called The Monday Painters for most of those years. She works in watercolor but has done some oils and acrylics. She likes the ease, convenience, flow, and portability of watercolor, as well as the cleanup.



### **Mary Sadauckas** *Mixed Media, Watercolors, Calligraphy*

570-289-4864

Coming from a background in radiology, Mary saw in art therapy its broad spectrum of healing offered through the creative process. Her interest in techniques and methods is equally broad, as combining calligraphy and the history of the written word with her watercolors. Therefore, she works in a range of media, reveling in the beauty of stained glass, the feel of clay, and the spontaneity of watercolor.

THE AREA'S MOST TRUSTED VAPE SHOP  
CELEBRATING 9 YEARS IN BUSINESS



*Zim Zim's*

V A P O R S H O P P E

THE AREA'S MOST TRUSTED SOURCE FOR:  
VAPING PRODUCTS, MODS, TANKS, E-LIQUID,  
DISPOSABLES, CBD & DELTA 8-9-10

A WIDE SELECTION OF THE HIGHEST QUALITY:  
DISPOSABLES/CARTS/FLOWER/EDIBLES

DELTA 8  
DELTA 9  
DELTA 10

**NOW IN 2 LOCATIONS**

8 W TIOGA ST.  
TUNKHANOCK  
570-630-4006

499 S MAIN ST.  
MONTROSE  
570-591-1690

CELEBRATING 9 YEARS SERVICING THE AREA  
WITH THE MOST KNOWLEDGEABLE & FRIENDLY  
CUSTOMER SERVICE, GREAT PRICES AND A HUGE  
SELECTION OF THE HIGHEST QUALITY PRODUCTS.

# Rood

GUITARS

607-759-0048

rood\_b88@yahoo.com

*Custom-created Guitars*  
*Guitar Repairs*  
*Montrose, PA*





# Studio 79

**Tunkhannock's  
newest  
art gallery  
and studio space**



**Studio 79 is devoted to  
artistic productivity  
and creative thinking.  
The gallery  
showcases local and  
national artists. All  
our special exhibi-  
tions are free and  
family friendly.**

**79 Warren St. Tunkhannock PA 570-762-5151  
studio79pa@gmail.com    studio79gallery.com**



# THE ARTISTS

111

Wyoming County Courthouse  
1 Courthouse Square, Tunkhannock, PA 18657  
570-836-3200 – wycopa.org



## Arts & Artists Exhibit

The Arts & Artists exhibit – a special companion show that features artwork by the artists participating in the 2023 Wyoming County Arts & Artists Tour – is on display at the Courthouse Art Gallery from April 28th through May 31st. The exhibit is open to the public during regular courthouse hours: Monday-Friday, 8:30am-4pm.


“Meet the Artists” Opening Reception – Friday, April 28th, 4-6pm

Discover the ... WYOMING COUNTY COURTHOUSE



Unless you have zero interest in architecture, you must visit the Wyoming County Courthouse at 1 Courthouse Square in Tunkhannock. Originally constructed as a two-story brick building in 1843, the present structure is the reimaged brainchild of architect D. R. Nott in 1870. This three-story masterpiece is rendered in a stunning Italian Villa style with hooded arched windows, heavy and beautifully decorated knee braces supporting the overhanging eaves of the roof, a projecting entrance with quoins (alternating corner stones), a striking clock tower, and an overall stucco finish. Stylistically similar additions were made to the rear of the building in 1937 and 1972.

112

Studio 79  
79 Warren Street, Tunkhannock, PA 18657  
570-762-5151 – studio79gallery.com 



**Bryon Rood** *Luthier*  
607-759-0048 [roodguitars.com](http://roodguitars.com)

Bryon began his journey in Phoenix, Arizona where he attended Roberto-Venn School of Luthiery. After graduation, he relocated to Santa Cruz, California to apprentice under world-renowned guitar maker, Scott Walker. After getting an honorary five-year Masters certificate, Bryon moved back to the northeast with his beautiful fiancée and opened a shop in Montrose, PA, where he builds high-end instruments.



**Jeremy Werkheiser** *Metal Sculpture*  
570-599-0438 [metalrelic.com](http://metalrelic.com)

Jeremy grew up in Pennsylvania and has always loved to make, build, and repurpose things using his imagination. Jeremy works with different steel components, from metal fasteners to sheet metal, carefully welding and manipulating the material to match his vision. He enjoys creating organic forms while preserving the industrial and mechanical aspects of the steel.



The citizens of Wyoming County take pride in their history, as evidenced by the Wyoming County Historical Society's impressive museum on the corner of Harrison and Bridge Streets, which used to be a primary school built in 1855. If you are lucky, you may get a tour guide who actually attended the school before it was given to the Historical Society in 1970.

Settlers from New England first came to the Wyoming Valley in 1762 but were driven out by the Native Americans already living there. It was not until after the Sullivan expedition in 1779 that families were able to establish a permanent settlement in the Tunkhannock area. In 1842, Wyoming County was created from part of Luzerne County. The name "Wyoming" is a Munsee Delaware word for "at the big river flat."

It is little surprise that one of the museum rooms is set up as classroom. Other displays honor two local heroes: World War II Admiral Harold Stark (1880-1972) and 1900 Paris Olympics five track and field medal winner Walter Tewksbury (1876-1968). But probably the museums most impressive display is that of Native American artifacts. Some items date back to 8,000-14,000 B.C.



**METAL RELIC**

**ART BY THE AWARD-WINNING METAL SCULPTURE ARTIST, JEREMY WERKHEISER**

*The capacity to dream and bring forth reality lives within us all. The heart of Metal Relic lies in the belief that you should never let fear or negativity stop you in the search of your passion.*

**METALRELIC.COM**

#### Discover the ... TUNKHANNOCK HISTORIC DISTRICT

More testimony to their pride in their history, the residents of Tunkhannock took on the monumental effort required to have such a large portion of the community listed on the National Register of Historic Places in 2005 testifies.

The Historic District extends from Tioga and Susquehanna streets on the south to Harrison Street and Putnam Avenue on the north, and from Wyoming Avenue on the west to Pine Street on the east. The district contains 248 buildings, of which 225 (90.7%) are contributing. Most date from the mid- and late-19th century, the period of greatest development in Tunkhannock. However, early and mid-20th century architecture is scattered throughout the district.

One of the oldest buildings in the commercial area is the Bolles-Bardwell-Tewksbury Building at 3 West Tioga and 85 Warren Streets. Built prior to 1842, the three-story frame building has Adamesque elements. Most notably is its massive center hall plan, pediment roof, and clapboard siding. Illustrating its adaptation over time is the front porch, which is Queen Anne in style. Originally a general store selling "drugs, medicines, and Yankee notions," the building also served at various times as an office for a dentist and lawyer, finally returning as a commercial establishment.

In the same area, at 45 East Tioga Street, is the Prince Hotel also dating from the 1840s and the Phelps Building, 1 East Tioga Street, built in 1844. The hotel has been used continuously as a hotel since its construction, which features a simplified Greek Revival style, accented by centrally placed four bay, second-level loggia (outdoor gallery). The Phelps Building is brick and three stories high, with a corbelled peaked cornice and narrow four-over-four windows. The decorative brick detailing is of particular interest.

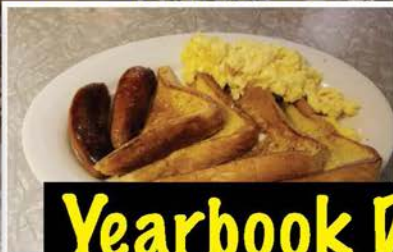
Much like the commercial district, Tunkhannock's residential area is densely built. It is very much a walking community, the streets lined with sidewalks (some slate) and shade trees, with house lots narrow and deep. Architectural styles represent the period of greatest development between the mid- and late-19th century and include Greek Revival, Italianate, Queen Anne, and Colonial Revival.





**Wyoming County's  
preferred choice for  
Breakfast  
in Northeast PA**

**Voted Best Breakfast in Tunkhannock!**



## **Yearbook Diner**

**Monday-Friday 6am-12pm • Saturday and Sunday 7am-12pm**

**21 E. Tioga St., Tunkhannock, PA 18657**

**facebook.com/YearbookDiner • 570.836.9540**



**Wyoming  
County's  
top  
choice  
for**

**Live Music  
& Entertainment**



**Apps • Bar Bites • Sandwiches  
• Salads • Entrees**

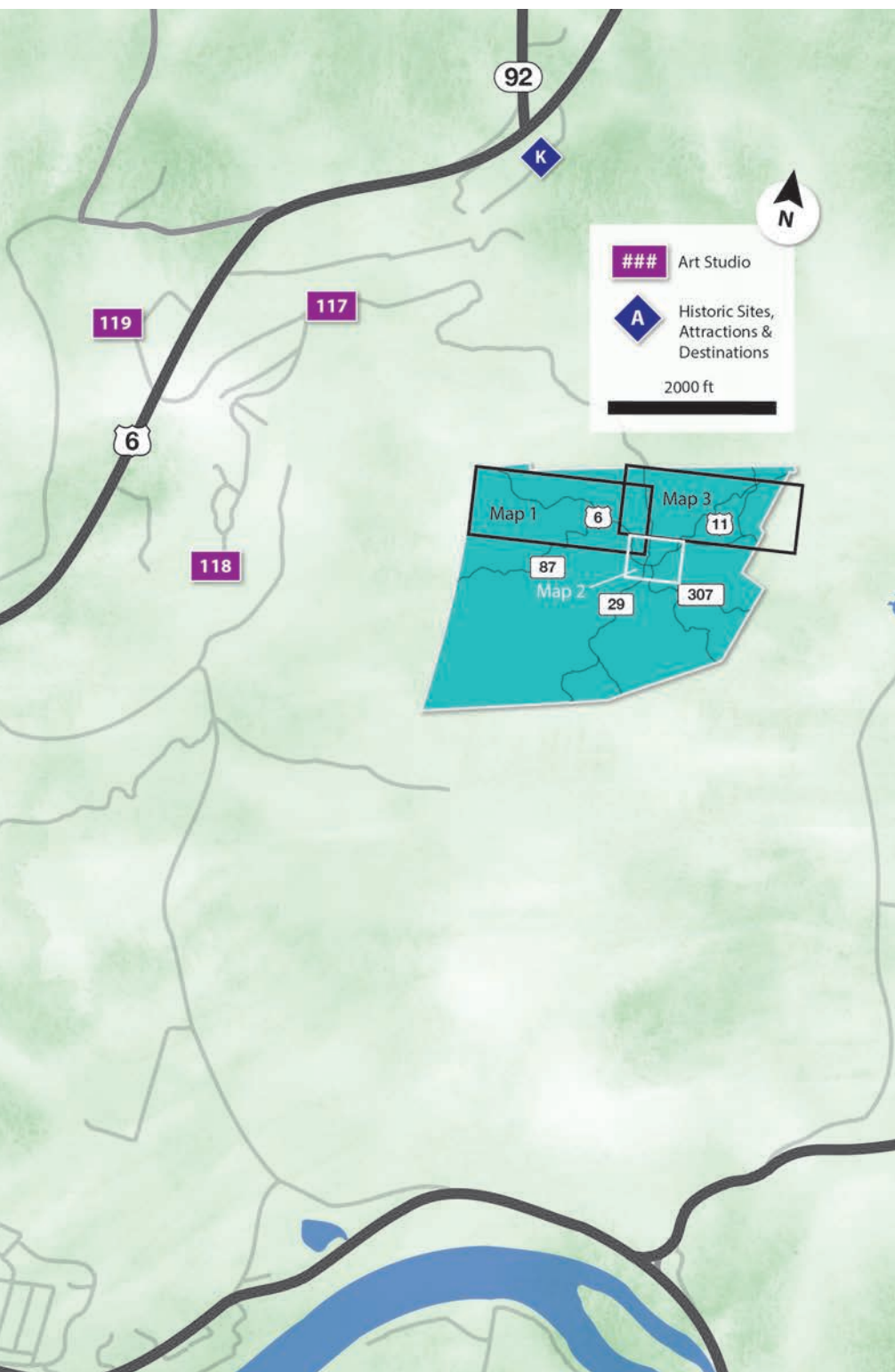
**Pool • Darts • Shuffleboard  
Live Music**



**The Blogg • 23 E. Tioga St., Tunkhannock, PA 18657**  
**Hours; 4pm - Closing • 570.836.1999 • facebook.com/BloggYourPubAndGrill**











**More than just movies!**  
**First-run, Foreign, Independent & Classic films!**



**Film Festivals**



**Holiday Events**



**Classes for Adults and Children!**  
**Pottery • Art • Sculpture • Animation**  
**Childrens Art /Theatre/Digital Camps**

**Many "Free" Cultural Events and Concerts**



**Check out our new murals and ongoing gallery exhibits!**



**Wyoming County Cultural Center**  
**DIETRICH THEATER**

60 E. Tioga Street, Tunkhannock, PA 18657

[www.dietrichtheater.com](http://www.dietrichtheater.com)

**570.836.1022**

In the heart of historic downtown Tunkhannock

**Visit [www.dietrichtheater.com](http://www.dietrichtheater.com)**



# THE ARTISTS

113

**Kitson Gallery**

34 East Tioga Street, Tunkhannock, PA 18657

570-499-5484 – [kitson-gallery-auctions.ebid.net](http://kitson-gallery-auctions.ebid.net)



**Michelle McKenzie** *Mixed Media,  
Found Object Assemblages*

Michelle is a mixed-media artist from Northeastern Pennsylvania who enjoys painting, drawing, and creating found object assemblages. She finds inspiration in nostalgia and the colorful, whimsical side of life. The process of creation for her is as much a creative expression as it is therapy for the soul.



**Alice J. Strauss** *Artist, Author*  
570-406-9577

A native of Connecticut, Alice graduated from the Rhode Island School of Design and had a long career as a textile artist in New York City and Philadelphia. Her rhyming children's book, "What if Ants Wore Orange Pants," is available at the Kitson Gallery in Tunkhannock. Nature themes and an obsession with carousels appear prominently in her artwork.

114

**Wyoming County Cultural Center at the  
Dietrich Theater**



60 East Tioga Street, Tunkhannock, PA 18657

570-836-1022 – [dietrichtheater.com](http://dietrichtheater.com)



**Stephen J. Colley** *Sculpture*  
570-240-6846

Stephen possesses over 30 years of experience as a professional working artist. He taught fine arts at the collegiate level for over 20 years, having instructed in all manner of artistic mediums – though sculpture has always been his tour de force. He worked for Robert De Niro, Sr. and assisted on exhibitions at the Metropolitan Museum of Art.



**Amy Griffith Colley** *Oils*  
570-240-6899

Amy studied painting with the late David L. Smith at the Swain School of Design in New Bedford, MA. The emphasis on color over form in his teaching made an impression on her. She and her husband, Stephen, are the artists in residence at the Dietrich Theater in Tunkhannock. They teach classes in drawing, painting, sculpture, and pottery.





Discover the ... DIETRICH THEATER



The events surrounding the Dietrich Theater restoration represent a dream come true. Originally built in 1936 by George Dietrich, the theatre continued to show movies for nearly 50 years. In the late 1980's, competition from the movie theaters at the malls forced it to close its doors. In time the building would fall into disrepair.

But in 1998 a small group of conscientious Tunkhannock residents began to discuss the purchase and renovation of the historic theater. An impressive fundraising campaign resulted in the newly formed Wyoming County Cultural Center purchasing the building in a matter of months. Grant writing, talking to bankers, hiring a building designer, and taking bids from contractors would finally lead to the theater reopening in 2001.

The Dietrich shows countless blockbuster, foreign, independent, and classic films. The theater also presents 350 cultural events, including seasonal film festivals, live theater, movies, concerts, and workshops to over 80,000 children and adults in a typical year. The seasonal film festivals bring in patrons from all over Northeastern Pennsylvania and beyond. Wonderful works of art are exhibited in the William Norris Earnshaw Gallery, the Walter A. and Doris W. Sherwood Gallery, and the New Gallery. Classes are offered in the Dorothy G. Sheldon Art Studio, the Peg Fassett Performance Studio, and the William Knight Daniels Children's Room for both youth and adults.



**12 WEEKS OF LIVE MUSIC AT  
THREE ENDLESS MOUNTAINS LOCATIONS**  
DIETRICH THEATER, TUNKHANNOCK  
OLD CARTER BARN, LAKE CAREY  
THE REIMEL CENTRE, MONTROSE

**Every Wednesday beginning June 21st  
and concluding September 6th**

***A different musical mood each week***

**Join us for one or two or purchase a season ticket  
and attend all 12!**

**ALL PERFORMANCES ARE INDOORS.**

*Each week, the doors open at 5pm  
and the first act goes on at 6pm.*

*On-site food, wine & beer are available  
for purchase beginning at 5pm.*

**Go to [SummerSessionsPA.com](http://SummerSessionsPA.com)  
today to purchase your tickets in advance and save!**

**For more information, call 570-289-4977  
or visit [SummerSessionsPA.com](http://SummerSessionsPA.com)**

*A North Branch Art Trail event*

2023



# GREENWOOD'S

FURNITURE - BEDDING - FLOORING  
**CELEBRATING 60 YEARS**  
Downtown Tunkhannock 836-3188



**SMALL TOWN SERVICE**  
**BIG CITY SELECTION**

**OVER 14,000 SQUARE FEET OF SHOWROOM TO SHOP !**  
**20 MILE FREE DELIVERY, EASY QUICK FINANCING AVAILABLE**



**Open Monday to Saturday 9:00 am till 5:00 pm**



**BELHANA  
GLASS • STUDIO**

**Tunkhannock, PA  
484.629.5924**



**Private Instruction  
Commissions**

**CREEKSIDE GETAWAY  
— in THE TREES**



Your comfortable  
home-away from-home  
in Tunkhannock, PA  
Spectacular 40-foot  
deck amid the trees  
overlooking the creek  
Private but close to  
shops, restaurants,  
and outdoor activities



*Artists'*  
**Open**  
**house**  
*Weekend*

## **27th Annual Studio Tour**

**Columbus Day Weekend**

**Indigenous People's Day**

**October 7, 8 & 9, 2023**

**10-5 each day**

**FOLLOW THE ORANGE ARROWS TO 30 ARTISTS  
AND ACTIVITIES IN TWO DOZEN LOCATIONS**

**ARTISTSTOUR.COM**



## 115

**Belhana Glass Studio**  
132 Runway Road, Tunkhannock, PA 18657  
484-629-5924



**Susan Zellner** *Stained Glass*  
484-629-5924

Susan began her journey in glass over 15 years ago. She finds creating with the color, shape, and texture of glass that is enhanced by interacting with light fascinating. She never tires of the moment when the completed piece is picked up and held to the light. It's magical. Susan's favorite subjects are seascapes, nautical, florals, wildlife, and abstracts.



**Renee Sands** *Fused Glass*  
607-761-5125

Renee's fused glass studio is located on 24 acres of rural scenery in the Endless Mountains. Her passion for glass began with a stained-glass panel and lesson in soldering from her dad. That passion grew into the world of fused glass, where she found an excellent outlet for both her creativity and innate curiosity.



**Concetta Schirra** *Stained Glass*

Concetta has always been creative. She has been a photographer for many years, capturing the beauty of nature in her lens. She is most happy when she's outdoors exploring Creation. Stained glass is fairly new to her. She has created simple designs and continues to learn. She loves how the glass relies on light to "come alive."

WYOMING COUNTY boasts a number of noteworthy historic sites, attractions, and destinations, including five that are on the National Register of Historic Places (NRHP). Throughout this booklet we encourage you to discover such important finds as Brown Hill Farms (see page 44); Creekside Gardens (see page 39); the Dietrich Theater (see page 34); Keystone College (see page 57); the Lenticular Truss Bridge at Lazy Brook Park (NRHP, see page 42); Mountain Sprigs Farm (see page 45); the Nicholson Tourism Center at the Historic DL&W Railroad Station (see page 56); the Old White Mill (NRHP, see page 17); The Oldest House (see page 11); the Tunkhannock Historic District (NRHP, see page 28); the Tunkhannock Viaduct (NRHP, see page 56); Vosburg Neck State Park (see page 18); the Wyoming County Courthouse (see page 27); the Wyoming County Fairgrounds (see page 12); and the Wyoming County Historical Society (see page 28)





creekside



cg



gardens



4 Village Ln. Tunkhannock, PA  
(570) 836-3595  
[creeksidegardensinc@gmail.com](mailto:creeksidegardensinc@gmail.com)  
[creeksidegardens.com](http://creeksidegardens.com)





# THE ARTISTS

116

Creekside Gardens

4 Village Lane, Tunkhannock, PA 18657

570-836-3595 – creeksidegardens.com 



## Laura Boner *Art to adorn the body*

Laura makes art to adorn the body. Nature is her main inspiration, along with symbolism. Her small sculptures, linoleum block carvings, and nature molds are “cast” by using metal clay. Laura is a full-time artist living in Tunkhannock with her two children, a dog, a flock of chickens, and a few noisy guineas.



## Carol Matheson *Watercolors*

570-351-1493 [cmatheson.faso.com](http://cmatheson.faso.com)

Carol is a watercolor artist living in Springville, PA. Self-taught, she started her watercolor journey by taking local and online classes. For this weekend’s tour, she is presenting floral portraits inspired by the garden. She has a passion for nature and looks to her garden for inspiration. She finds watercolor the perfect medium to express the delicacy of the flowers.



## Maureen Van Nostrand *Oils*

570-278-4590

Maureen is a full-time oil painter who brings stunning images to life on canvas with the intention of invoking a sense of awe, peace, and wonderment for the viewer, regardless of the subject matter. She also welcomes commissioned work to capture the essence of people, pets, or a favorite landscape or vacation spot.



Discover ... CREEKSIDE GARDENS



Before leaving Tunkhannock, be sure to stop at Creekside Gardens, just south of the borough at 4 Village Lane. Their website explains why you must do so: “When owners Kevin and Sherri Kukuchka first met as horticulture students in 1994, the site which is now Creekside Gardens was simply a cornfield...but Kevin had a dream to create a destination. A love and appreciation of plants and nature has always been at the heart of Creekside.” Be sure not to miss their butterfly house.



## Carol Matheson

Watercolor Artist  
Springville, PA

cmatheson.faso.com  
carol@windyhilldesigns.com  
570.351.1493



## Maureen Van Nostrand Artist

9601 State Route 167  
Montrose, PA 18801  
570.278.4590  
maureenvannostrand.com



### DINING GUIDE

Looking for places to eat while you're enjoying the tour?  
We're happy to recommend the following options:

*Creekside Inn, Tunkhannock (see ad page 41)*

*Germana's Pizzeria, Nicholson (see ad page 56)*

*Kristi's Kountry Kitchen, Meshoppen (see ad page 12)*

*Mark's Valley View Restaurant & Motel, Laceyville (see ad page 6)*

*Meshoppen Pizza, Meshoppen (see ad page 15)*

*T&C Grille & Bakery 420, Tunkhannock (see ad page 22)*

*The Wiser Choice, Laceyville (see ad page 7)*

*The Yearbook Diner & The Blogg, Tunkhannock (see ad page 29)*

PLUS

*D&C Fuel Sales Mini Marts, Tunkhannock (see ad page 19)*

*Marty's Market, Meshoppen (see ad page 15)*

Need a place to stay? Check out:

*Creekside Getaway in the Trees, Tunkhannock (see ad page 36)*

*Mark's Valley View Restaurant & Motel, Laceyville (see ad page 6)*





# THE ARTISTS

117

**Fun & Functional Pottery**  
8 Golf Lane, Tunkhannock, PA 18657  
570-240-6821 [f](#)



**Megan Kobbe** Pottery  
570-240-6821 [f](#)

You can't find the magical and creative, slab and hand-built pieces that Megan creates anywhere else. She makes unique wheel-thrown mugs and bowls made with stoneware clay. The beauty is that no two pieces are alike. Each has Megan's time, energy, and vision, hoping to make a place in your home.



**Tommie Robinson** Clay Sculptures  
570-875-9295

Tommie is a crafter making an assortment of clay items. She uses high-fire clay and makes unique handmade sculptures such as gnomes and pumpkins. She also makes chickens, roosters, and other animals, as well as creative incense burners. Everything is handmade. Tommie also makes a variety of Christmas ornaments.



**Gail Vieczorek** Wood Carving, Pine Needle Baskets  
570-836-5407

Gail has been making pine needle baskets for around 40 years, beginning when her mother sent her a news article on how to make them along with pine needles from Florida. She uses raffia to stitch the needles into a basket and uses beads and pendants to dress them up. A couple years ago, Gail also began making hand-built wooden bowls.



**Fun and Functional Pottery**

Unique wheel thrown mugs and bowls made with stoneware clay



8 Golf Lane  
Tunkhannock  
PA, 18657

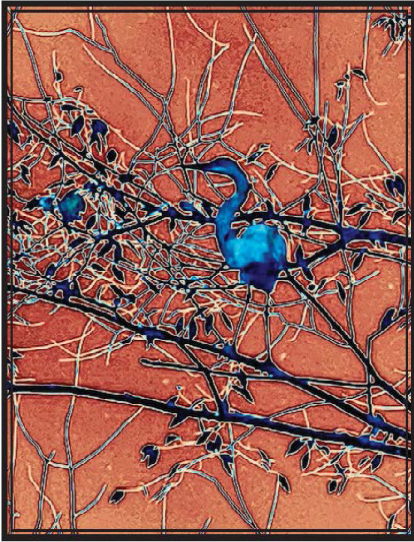
[f](#) Like us on Facebook

**CREEKSIDE INN**

**Serving Lunch & Dinner**  
**Homemade Specials**  
**Outdoor Seating**  
**Weekly Entertainment**

**406 SR 92 N**  
**Tunkhannock, PA 18657**  
**570-836-6410**  
**Sun-Thu 11am-11pm • Fri-Sat 11am-2am**

# VICTORIA SWITZER



Artist, Susquehanna County PA  
570-690-2929 • yoko@epix.net



## Robert Murray Smith

610-304-4263  
srobert10@comcast.net



Discover the ... LENTICULAR TRUSS BRIDGE



Lazy Brook Park would make a fine stop for a picnic and a great place to take in a rather unique historical experience. There are only four lenticular truss bridges left in Pennsylvania, but only one of them has been moved—about 15 miles downstream from its original location in Nicholson Township. With its interesting lens-like design, the bridge was built in 1881, but closed in 2005. Because of its historical significance, the bridge was completely restored to its original appearance and moved to the park a few years ago, to serve as a foot bridge.



# THE ARTISTS

118

**Darlene Keen Studio**  
507 Shadowbrook Drive, Tunkhannock, PA 18657  
719-360-5489



**Darlene Keen** *Acrylics*  
719-360-5489

Darlene and her husband, Gregg, have lived and worked around the globe and across the U.S. They now live in Pennsylvania where she has found time to learn acrylic, pastel, and watercolor painting. She creates from what she observes outside in nature. Darlene walks every day, snapping photos to capture views that catch her interest, then creating paintings from these photos.

119

**Shadowbrook Resort**  
201 Resort Lane, Tunkhannock, PA 18657  
800-955-0295 – shadowbrookresort.com



**Bubba** *Watercolors, Charcoal, Graphite*  
610-304-4263 [YourEdgeOnTheTrade.com](http://YourEdgeOnTheTrade.com)

Bubba is fortunate to live on the Susquehanna River where he is surrounded by nature, as he loves to paint nature, using his tools of choice: watercolors, charcoal, and pencil. He feels that color is very important in a piece of art. Bubba also educates investors in Trend Trading and stock market history.

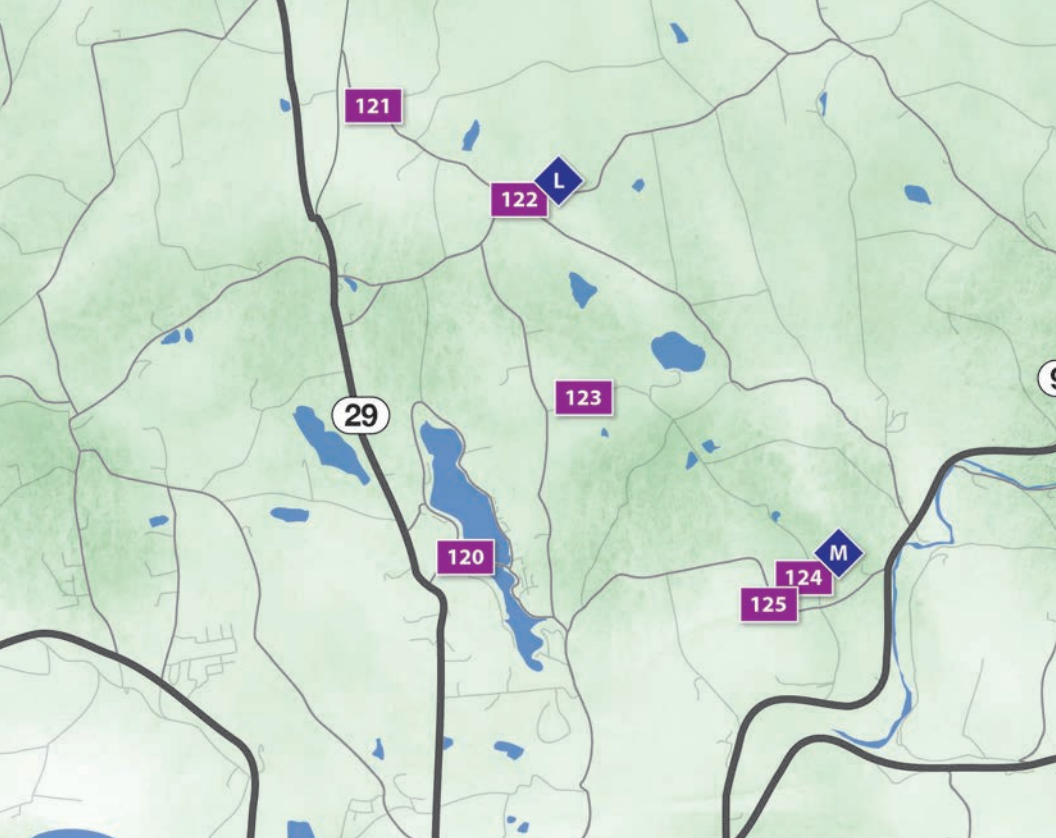


**Victoria Switzer** *Acrylics, Photography*  
570-278-2465

Victoria's work as a painter and photographer is an expression of her love and respect for nature as well as her commitment to protect it. She lives and works in Dimock, with her studio being in her home that sits along Burdick Creek, surrounded by glorious Hemlocks.

WYOMING COUNTY has a total area of 405 square miles, of which 397 square miles is land, and 7.7 square miles is water. The land surface is generally hilly or mountainous, the soil is fertile, and timber, coal, and iron are abundant. The county is intersected by the North Branch of the Susquehanna River and drained by Tunkhannock Creek, Mehoopany Creek, and other large creeks.

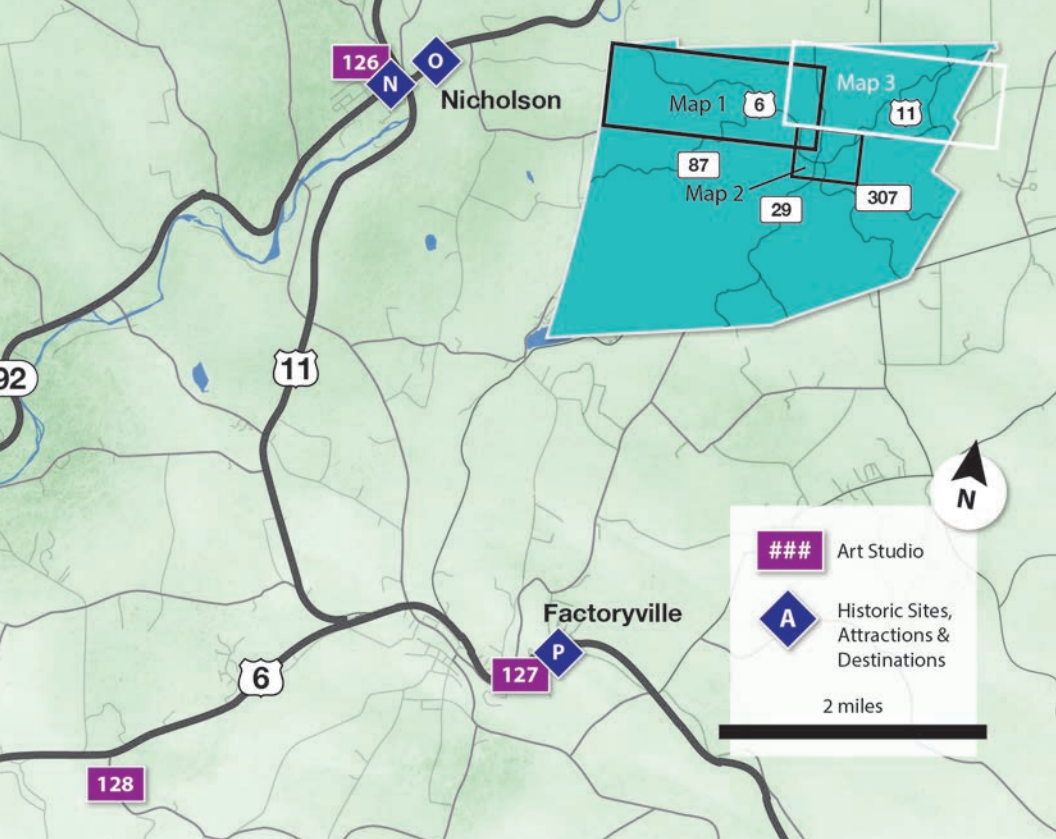




Discover ... BROWN HILL FARMS



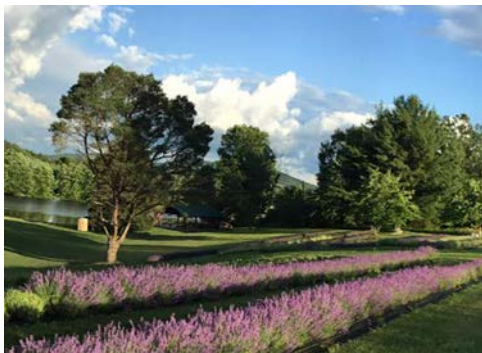
Spring, summer or fall, there is something special to do at Brown Hill Farms, located on West Avery Station Road, about seven miles north of Tunkhannock. Their U-pick tulip season opens at the end of April, with four acres of tulips and daffodils ready to pick. The farm is bursting with life in the summer, with fresh vegetables available at two roadside stands, and “Flower Fridays” in July. Visit the wildflower field and cut flower garden. Sunflower season starts in August, dazzling visitors with glistening fields of gold. Think of the pumpkins—pumpkins that you can pick right off the vines at the end of September, along with potato-shooting cannons, a challenging corn maze, a wagon ride, concessions, and farmer’s market.



#### A NOTE FROM THE OWNER:

We invite you to visit our fragrant and scenic farm during our Lavender Days in June and July. As always, you can cut fresh lavender to take home and other lavender items can be purchased on site. Additionally, please contact us if you'd like to schedule a quiet gathering or picnic at our pavilion overlooking our serene pond. We sell relaxation.

Barbara – 570-851-9290

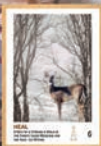


Discover ... MOUNTAIN SPRIGS FARM



Who doesn't love the scent of lavender? Get your fill at Mountain Sprigs Farm, northeast of Tunkhannock at 205 Stark Road. Every summer, Mountain Sprigs Farm welcomes visitors to take in and, yes, pick, lavender to their heart's content. Fields of lavender fill the landscape with purple blossoms peaking in July. During the season, visitors can stroll through the fields and pick their own lavender. The farm also plans weekday events and DIY activities. Mountain Sprigs Farm is only open on select days during lavender season. Call or check online for operating hours. You can also find their products at local farmers' markets.





& The Original Reiki Tarot

**LISA WRAY ART at LemonTree**  
GALLERY & GIFTSHOP

[www.lisawray.com](http://www.lisawray.com)

570.836.2887

Airbnb Lemontree, Springville PA

GPS: 102 West Avery Station Road, Tunkhannock, PA



Tunkhannock, PA

570.851.9290 | 570.851.9291

Like us on  
Facebook







# THE ARTISTS

120

Lake Carey Pottery & Friends  
6 Shore Drive, Tunkhannock, PA 18657  
215-833-4799



**Kathi Harter Keefe** Pottery  
215-833-4799

Kathi's work is mainly functional and is influenced by pottery of ancient cultures. She receives her inspiration when she travels and sees how clay has been an integral part of ancient societies. She often incorporates symbols from other cultures. Perhaps, in a thousand years, someone will find one of her pieces and wonder, "what does that mean"?



**Nannette M. Burti** Pottery  
570-507-2540

Nannette has been working in ceramic art for many years. She fell in love with clay at an early age. She produces mostly hand-built, gas or wood fired stoneware. She's interested in making her work look archaeological and also loves to show process in her pieces.



**Rebecca Kamoski** Pottery  
570-704-8655

Rebecca has always been drawn to the earthy medium of clay. The creation of pottery in all its forms is natural and centering to her. As a hand builder, she loves the deliberate method of sculpting a piece of clay with her hands. She makes vessels that can be quite beautiful as well as useful.



**Claire Davis** Pottery, Tile

Claire really loves making things. Clay is the perfect medium and crazy versatile. She creates sculpture, bowls, cooking pots, prayer wheels, almost anything she can think of. She particularly likes hand building. It is meditative forming the clay and she lets it lead her to what it wants to become. Claire is forever learning and creating.



No ticket  
required  
for the art  
exhibit  
May 5, 6 &  
7, 2023

Spring U-Pick tulip and Daffodils,  
tour the fields and pick a  
bouquet



Get  
your  
U-Pick  
tickets  
here

# Brown Hill Farms

405 east Avery station road  
Tunkhannock Pa 18657  
570 241-8430

[Brownhillfarms.com](http://Brownhillfarms.com)





# THE ARTISTS

121

Lemon Tree Art Studio

102 West Avery Station Road, Tunkhannock, PA 18657

570-836-2887



**Lisa Wray** *Tradigital Art, Reiki Tarot*  
570-836-2887 [LisaWray.com](http://LisaWray.com)

Lisa is a Pennsylvania-based artist, and one of the early pioneers of visual graphic media arts. Her works can be viewed as tradigital art and metaphysical art. She graduated from the Hussian School of Art, Philadelphia, in 1979, where she studied commercial and fine art, and was inspired to create the original Reiki Tarot card deck in 2003, used for the purposes of self-divination and meditation.

122

Brown Hill Farms

405 East Avery Station Road, Tunkhannock, PA 18657

570-241-8430 – [brownhillfarms.com](http://brownhillfarms.com)



**Michele Brown** *Watercolors*  
570-241-8430 [brownhillfarms.com](http://brownhillfarms.com)

Michele lives and works at Brown Hill Farms, located in the Endless Mountains. Her art comes directly from the farm and her travels across the U.S. Michele enjoys painting homesteads, animals, and flowers. She works mostly in watercolor and gouache. Some of her paintings are traditionally framed; others use a modern technique of waxing watercolor as a framing option.



**Dr. Sonji Lee** *Encaustic Mixed Media, Fabric Art Collage*  
570-278-5088

Sonji's process for creating encaustic, mixed media art begins with exploration. Frequent walks in the woods and fields, along streams, and over dirt roads provide time for reflection and inspiration and the opportunity to gather unique, natural materials to incorporate in her art. Plant life, wood, old fence wire, rusted metal, fungi, bird's nests, stones, and more are embedded with beautiful papers or fabric into encaustic paint and medium, fusing with heat after each layer.

WYOMING COUNTY has one college, Keystone College (also in Lackawanna County), and six school districts: Elk Lake School District (also in Susquehanna County); Lackawanna Trail School District (also in Lackawanna County); Lake-Lehman School District (also in Luzerne County); Tunkhannock Area School District; Wyalusing Area School District (also in Bradford County); and Wyoming Area School District (also in Luzerne County).



Expanded walking trails with native habitat and a  
wildlife watching post, bluebird trail and a lot of new  
encaustic works for your pleasure...



Encaustic Mixed-Media Artist

# DR. SONJI LEE

@THE FARM at JOHNSON POND



570-278-5088 • FB@TheFarmatJohnsonPond  
sonji@thefarmatjohnsonpond.com

512 Johnson Pond Road  
Montrose, PA 18801

*The Art Nest*

• THE FARM AT JOHNSON POND •


In every walk with nature  
one receives far more  
than he seeks. —John Muir





# THE ARTISTS

123

**Sarrah Dibble-Camburn Studio**  
647 Stark Road, Tunkhannock, PA 18657  
570-237-1904 



**Sarrah Dibble-Camburn** *Acrylics, Mixed Media*  
570-237-1904 [etsy.com/shop/eponaspaintbrush](https://www.etsy.com/shop/eponaspaintbrush)

Passionate about horses, Sarrah presents her artwork through Epona's Paintbrush, a name inspired by Celtic goddess, Epona, goddess of horses, donkeys, and ponies. Upon receiving a Masters of Art Education and BFA in Painting from Marywood University, Sarrah has taught elementary art for seven years in the Blue Ridge School District and is an adjunct professor at Keystone College.

124

**Mountain Sprigs Farm**  
205 Stark Road, Tunkhannock, PA 18657  
570-851-9290 



**Silver Threads Quilting Group** *Quilting*

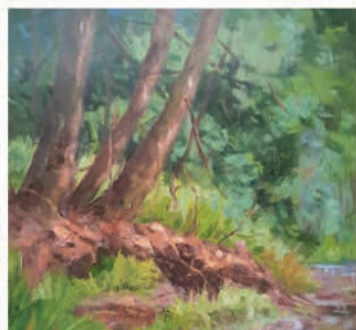
Silver Threads consists of 10 women who came together with the love and intricate construction of quilts and other needlework. During the Arts & Artists Tour, there will be many quilts on display in a vintage farm barn, overlooking the lavender fields and the Endless Mountains. There will also be handmade items for sale.



**J&J Apiaries** *Honey*

Sharon and Jim Mislevy are spending their retirement years raising bees and collecting their golden nectar, honey. They sell local and raw honey as well as orange blossom honey and have many sizes of bottles and prices to choose from.

WYOMING COUNTY is adjacent to five other Pennsylvania counties: Susquehanna (north), Lackawanna (east), Luzerne (south), Sullivan (west), and Bradford (northwest).



**Terry  
Proctor**

**Local Plein Air Landscapes**  
570-665-0209 . [jptpnepa@gmail.com](mailto:jptpnepa@gmail.com)



*Charlotte  
Dickinson*

**Fine Art**

**570-836-3438**

**c.dickinsonfineart  
@gmail.com**





# THE ARTISTS

125

**Terry Proctor Studio**  
254 State Route 1002, Tunkhannock, PA 18657



**Terry Proctor** *Oils*  
570-665-0209 [f](#)

Terry paints impressionistic plein air oil paintings of the beautiful Endless Mountains region. She also paints from still lifes or floral arrangements. Terry comes from an artistic family including her mother Charlotte Dickinson, who helped found the American Impressionists Society. She has studied under many great mentors and has her paintings in many private collections.



**Charlotte Dickinson** *Oils*  
772-766-9034 - [charlottedickinsonfineart.com](http://charlottedickinsonfineart.com)

Charlotte has studied with master artists W. Schultz and Charles Movalli. She feels we learn from those before us and subsequently develop our own unique style. "Collectors live to see the spirit of the artist in their work." Charlotte enjoys painting en plein air with her daughters, Terry Proctor and Debi Cumens.

## A local business helping other local businesses connect with the world.

With over 20 years of Web design and Internet experience, we offer complete solutions including:

- Web design
- Web hosting
- Domain registration & maintenance
- Personalized email accounts
- Contact management
- Social media expertise (Facebook, Twitter, & More)
- 24 / 7 / 365 security and support services
- Very competitive pricing for all our services

Let us design or upgrade your business image on the Internet.

Located in Wyoming County Call us @ 570-885-0101  
email: [info@pennhost.com](mailto:info@pennhost.com) Visit us on the web at [www.PennHost.com](http://www.PennHost.com)



# Nicholson Tourism Center at the Historic DL&W Railroad Station



## Nicholson Heritage Association

PO Box 496, Nicholson, PA 18446 • 570-871-0510 • [nicholsonheritage.org](http://nicholsonheritage.org)

Dedicated to the historic preservation of Nicholson, Pennsylvania and the surrounding region

## H. Dean Fisher [HDeanFisher.com](http://HDeanFisher.com)

**MEDUSA**  
RISE OF A GODDESS



H. DEAN FISHER

Author of the  
fantastic, the  
scientifically  
fictional,...

The  
Redemption  
of Bes



H. Dean  
Fisher

...and the  
macabre

## Shady Pond Studio



Original  
Fine Art  
Limited  
Edition  
Prints

### Rich Griffith

503 Lower S. Main St., Montrose, PA 18801  
570.278.4329 • [griff112@yahoo.com](mailto:griff112@yahoo.com)



Walter  
Ball

**570.278.9698**  
[thepaintball49@gmail.com](mailto:thepaintball49@gmail.com)  
[walter-ball.pixels.com](http://walter-ball.pixels.com)

**Paintings & Fine Art Prints**

126

Nicholson Tourism Center at the Historic  
DL&W Railroad Station

21 Lackawanna Trail, Nicholson, PA 18446

[nicholsonheritage.org](http://nicholsonheritage.org)



**Walter D. Ball** *Oils, Pastels*

570-278-9698 – [walter-ball.pixels.com](http://walter-ball.pixels.com)

Walter's paintings are mostly nature: scenery, animals, and flowers. Most are done in oil or acrylic paint but, sometimes, Walter prefers to use pastel pencil.



**H. Dean Fisher** *Author*

[HDean@HDeanFisher.com](mailto:HDean@HDeanFisher.com) – [hdeanfisher.com](http://hdeanfisher.com)

H. Dean Fisher is author of the fantastic, the scientifically fictional, and the macabre. His most recent novel, "Medusa: Rise of a Goddess," was a quarterfinalist for the BookLife Prize. He writes on such themes as abuse of religious authority, LGBTQ+ rights, and feminism – all with a thread of mythology.



**Richard Griffith** *Pastels, Watercolors*

570-278-4329

Rich has been painting and drawing since childhood. Working in watercolors, acrylics, and pastels, he paints in a realist style. While most of his subject matter consists of local scenery and historic buildings, he also paints portraits. His paintings also include farm equipment and vintage vehicles.



**L.P. Howard III** *Oil on Canvas, Plein Air*

570-289-4897

Rip likes to find rural subjects and has painted many Susquehanna County locations. Our area has a lot of pretty spots, and many streams. Rip and a friend recently painted a scene of a hemlock grove. They both seem to like the same subjects. It's fun to go painting with someone, to get out and sit and see things around you.



Discover the ... **NICHOLSON TOURISM CENTER AT  
THE DL&W RAILROAD STATION**



Historical architecture is well worth preserving, even bringing it back to its former glory. That's exactly what the Nicholson Heritage Association had in mind when, in 2012, it purchased the former Delaware, Lackawanna and Western Railroad's (DL&W) Nicholson Railroad Station, located right off Route 11.

Built in 1849 by the Liggett's Gap Railroad, one of DL&W's predecessors, this landmark has been a prominent fixture in the community, and the Association felt it worthwhile to do all the grant writing and fundraising to restore the building. That restoration began in 2018.

In 1855, the local U.S. Post Office was relocated to the station, and the name of the settlement was changed from Baconville (sometimes also referred to as Bacontown) to Nicholson, in honor of Pennsylvania's comptroller general of the late 1700s, John Nicholson. In May 1878, the first telephone service in Northeastern Pennsylvania was opened between the station in Nicholson and the DL&W station in Scranton, about 21 miles south.

The facility will open just in time for the Wyoming County Arts Tour, and participants of the tour will be the first to be able to tour the beautiful Nicholson Tourism Center.



THE STUDIO OF	
	<b>CHARLES WELLES</b>
	<b>Marble Sculpture</b>
	684 Fox Road Factoryville, PA 18419
	570-348-4951 <a href="mailto:charles.welles@verizon.net">charles.welles@verizon.net</a>

Discover the ... **TUNKHANNOCK VIADUCT**



It is downright impossible to visit the Nicholson Tourism Center without noticing the Tunkhannock Viaduct (also known as the Nicholson Bridge). Built by the Delaware, Lackawanna & Western Railroad between 1912 and 1915, the bridge has served many owners: DL&W, Erie Lackawanna, Conrail, Delaware & Hudson (also operated by Guilford Transportation, and New York Susquehanna & Western) before the current owner, Norfolk Southern Railway. Norfolk Southern trains still run between Binghamton and several other New York state locations, along with rail yards in Pennsylvania such as Scranton, Allentown, and Harrisburg.

Modern in material and function but (very) traditional in form, the Tunkhannock Creek Viaduct was the largest reinforced concrete bridge of its kind when it opened. The 2,375-foot-long bridge was created as part of a summit cut-off in response to increased anthracite trade. With its 10 semicircular, two-ribbed, open-spandrel 180-foot-span arches, the bridge resembles an ancient Roman aqueduct. Two smaller and flatter abutment arches are buried in the fill, one at each end.

Each year the town organizes a festival in honor of the bridge called Nicholson Bridge Day. The entire main street of the town is shut down and filled with vendors, entertainment, and more.



# THE ARTISTS

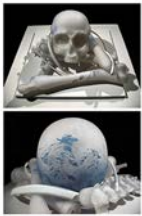
127

**Keystone College**  
1 College Road, La Plume, PA 18440  
570-945-8000 - keystone.edu



**Amy Denmon** *Ceramics*  
570-665-1506 [cervineceramicsbyamydenmon](http://cervineceramicsbyamydenmon)

As an alumnus and now employee at Keystone College, Amy is grateful to not only represent the past but help to continue to grow the art program. Her work is based on functional pieces that have use in your everyday life while bringing joy and beauty in the simplest items.



**Brandon Guy Smith** *Glass Maker, Metal Maker*  
[bsmithglass.com](http://bsmithglass.com)

Brandon is a glass and mixed media artist, educator, and technician living and working in Factoryville, PA. He earned his B.F.A. from Tyler School of Art and his M.F.A. in Glass at Southern Illinois University. Brandon worked as the Exhibitions Technician for the Denver Botanic Gardens and is currently teaching and running the glass studio at Keystone College.

128

**The Studio of Charles Welles**  
684 Fox Road, Factoryville, PA 18419



**Charles Welles** *Marble Sculpture*  
570-348-4951 [CharlesWelles.com](http://CharlesWelles.com)

Charles is a sculptor who primarily carves marble. His work includes figurative, abstract, and conceptual work. His studio is in Bardwell, near Factoryville. He exhibits throughout the northeastern United States as well as regionally. He is also a partner in the Springville Schoolhouse Art Studios in Springville, PA.

Discover ... KEYSTONE COLLEGE



Keystone College is Wyoming County's only college. Its mailing address is La Plume, in Lackawanna County, but much of the campus is in Factoryville in Wyoming County.

The private college was founded by 21-year-old John Howard Harris in 1868 as a high school academy and first began to conduct instruction in the local Baptist church. Harris would later become president of Bucknell University. The academy graduated to a junior college in 1934, began offering baccalaureate degrees in 1998, and master's degrees in 2014.

# curcio**printing**.com

*We make printing &  
mailing **easy!***



**607.729.2477**



Certified  
Women-Owned  
Business Enterprise



**Fostering Community  
Inspiring Creativity**

**Celebrating Artists**



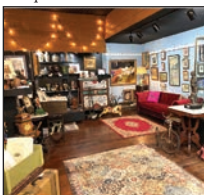
**More than 65 Regional Artists  
8,000 square feet of galleries  
Art classes available**

158 Church St Montrose PA  
570-243-1075

# KITSON GALLERY

34 East Tioga Street, Tunkhannock, PA 18657

Featuring an eclectic mix of art, antiques & collectibles in the heart of downtown Tunkhannock.



Showcasing many antique and collectible pieces of art from the east coast of the United States, from Maine to Florida

**LOCAL ARTISTS!** Among the local artists currently on display: Amanda Robinson, Billy Brandenburg, Erika Gibson-Bertram, Hank Fells, Morgan Marie Scudder, and Rhi Wallace

**Wednesday, 12pm-5pm • Friday, 12pm-5pm • Saturday, 10am-5pm and  
May through November; Sunday, 10am-3pm • or call for appointment: 570-499-5484**

Join the Kitson Arts Alliance's

## Red Couch Concert Series

where music meets all other arts, antiques & collecting

The Kitson Arts Alliance is seeking musicians, poets, collectors, and any other artists who would like to share their art form while being recorded on the glamorous red couch at Tunkhannock's Kitson Gallery.

In addition to performers, we're looking for anyone who would love to share their passion for collecting - those who love to go out picking or treasure hunting, digging in dumps, old homes, grandma's attic, flea markets, fairs, or antique shops. We would love to hear your story and learn all about your passion for collecting.

We are offering up our large vintage-style red couch for you to be recorded as you share your passion. We will be providing each participant with exposure on all of our Facebook pages, YouTube, and the kitsonartsalliance.org and northbranchtrailart.com website.

To express interest and discuss details, please contact Patrick Robinson at

**570-499-5484** or

[patrickrobinson.ugs@gmail.com](mailto:patrickrobinson.ugs@gmail.com)



Tom Sweeney of Blakgraz and guitarist Matt Bennick perform on the red couch during Hometown Fall Fest 2021

**Watch for upcoming Red Couch Concert Series concerts to feature such local talent as:**

Angelo Maruzzelli of The Boneflowers • Dave Brown & The Dishonest Fiddlers

J. P. Williams • Lindsay Van Gorden • Matt Bennick • Gary Carl • Blakgraz and many more!

## ATTENTION ART LOVERS AND COLLECTORS!

### Great Art Gift Giving Opportunity

This is an opportunity to have well known national cartoonist Bob Heim hand draw cartoons to be given as gifts!!! Bob will hand draw five original cartoons with at least one customized to the recipient's interests. He will then mail them, one per week for five weeks to whomever you decide to give this amazing gift of art to. They are hand drawn on heavy art paper and each one is personally signed by Bob Heim. You may contact Patrick Robinson at 570-499-5484 (please leave a voicemail and we will respond within 24 hours or less) and we will make arrangements for you to speak with Bob and provide interesting details of whom you are gifting the cartoons to, so that at least one of the five cartoons can be specially personalized to that person. This is a great opportunity to own original hand drawn cartoons signed by Mr. Bob Heim, as his works for this quantity of cartoons has sold for over \$1,250.00, but with our special arrangement with Bob through Kitson Arts Alliance you can get this for \$595.00, so that's \$655.00 off of Bob Heim's original art!!!



**ABOUT BOB HEIM:** Bob Heim has sold his cartoons to publications that include Barron's and American Banker, as well as The Washingtonian, New Woman, Chicago, Cincinnati, Gallery, and King Features Syndicate. His work has appeared in print ads, as book illustrations, and in numerous house organs including one for employees of E.F. Hutton. A collection of previously-published banking cartoons sold nationally and a more recent book containing cartoons on a wide variety of subject matter, "That Was the Year We Had Aunts," is presently being promoted.

In January 2005, Bob became the first cartoonist to be featured with a one-man show in the University Medical Center Gallery at Princeton. He has also appeared live on WUSA Channel 9 (the CBS affiliate in Washington, DC), which carried his work on one of its websites. A book for children of all ages, titled "The Squeaking Earl," was published in 2009 and is available on such websites as Amazon and Barnes & Noble, and through bookstores.